

R&D center of Shenzhen Coship Electronics Co., Ltd.		File Number	Version	Classification
			V1.0	
Title	AnySight20X Manual V1.0		Date	2006-4-10



AnySight20X Manual V1.0

File Author: Yanhong Cheng **Date:** 2006-4-10

Item manager: **Date:**

Auditing: **Date:**

Authorize: **Date:**

SHENZHEN COSHIP ELECTRONICS CO., LTD

Files' History Releasing Record

Sequence number	Alter (+/-) explanation	Author	Version number	Date	Authorized by
1	Draft	Yanhong Cheng	V1.0	2006-4-10	

Basic Functions and Applicabilities

1. Basic functions

This document is developed as an introductory manual, which provides subscribers instructions how to use this STB.

2. Applicabilities

This document is suitable for IP STB R&D related research engineers, design engineers, sales managers and end subscribers.

Content

1. Preface	5
1.1 Background.....	5
1.2 Product Information	5
1.3 Glossary and Abbreviations	5
1.4 Reference	5
2. System	6
2.1 Network Setting	6
2.1.1 Network Mode Setting.....	7
2.1.2 Update Setting	8
2.1.3 Homepage Setting	8
2.2 Advanced Setting	8
2.3 Restore Default	9
2.4 System Information	9
3 EPG	10
3.1 Multicasting (Digital TV)	11
3.2 VOD (Movie)	12
3.3 Music on Demand	13
3.4 Web Surfing	13

1. Preface

1.1 Background

1.2 Product Information

Product Name: IP STB

Model: AnySight20x

1.3 Glossary and Abbreviations

Abbreviation/glossary	Full Name	Explanation
EPG	Electronic Program Guide	
DTV	Digital Television	Digital Television/ multicast
VOD	Video On Demand	

1.4 Reference

2. System

After the STB starts up, subscribers press 'info' on the remote control to enter system setting page as picture 2-1:



Picture 2-1

2.1 Network Setting

Click 'Network' in picture 2-1, and input correct server password (default is 123456), then you could enter the network setting page as picture 2-2:

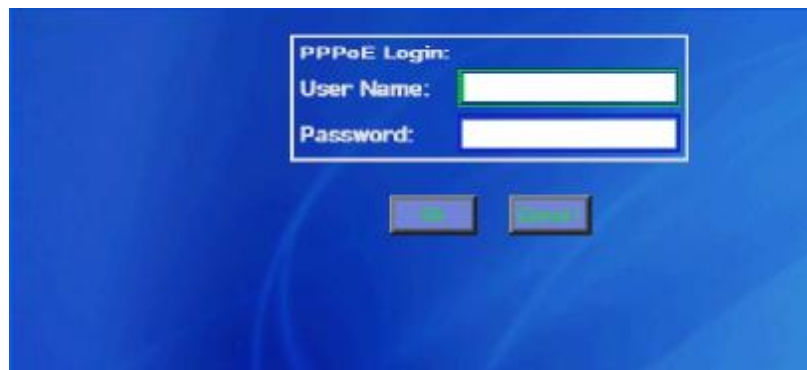


picture 2-2

2.1.1 Network Mode Setting

As picture 2-2, there are four ways to set up the network connection.

- (1) Fixed IP: Setting IP Address, Subnet Mask, Gateway and so on, and pressing 'OK' to save.
- (2) DHCP: Choosing DHCP, then pressing 'OK' to save.
- (3) Static IP + PPPoE: Choosing PPPoE, and setting IP Address, Subnet Mask, Gateway and so on. Pressing 'OK', and inputting correct user name and password in PPPoE log on page to be saved as following picture 2-3.
- (4) DHCP+PPPoE: Choosing PPPoE and DHCP, then clicking 'OK' to enter PPPoE log on page. Inputting correct user name and password to be saved as following picture 2-3:



picture 2-3

2.1.2 Update Setting

Each product of AnySight20X provides the function of http update, you need set correct update address in the blank as picture 2-2 in order to implement the update function. For example, '192.168.1.101/Upg/', and 'http:/' can be omitted.

2.1.3 Homepage Setting

When the network connects normally after the STB boots up, the STB will enter EPG homepage, so in order to enter EPG homepage you want, please set correct EPG homepage path in the blank as picture 2-2, for example, '192.168.1.101/EPG/', and 'http:/' can be omitted as the update address.

2.2 Advanced Setting

Press 'Advanced' in picture 2-1 to enter Advanced Setting page. As following picture 2-4:

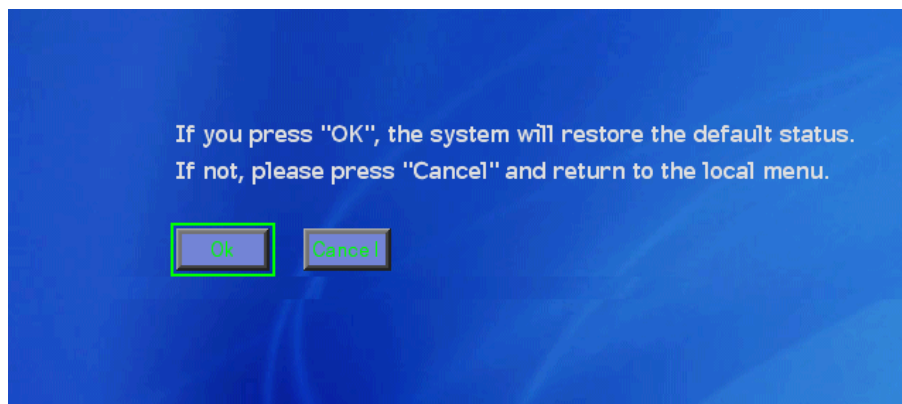


picture 2-4

Video decoding, aspect ratio, video output device, track, languages, opacity and so on can be set according to subscriber's request.

2.3 Restore Default

Pressing 'Restore System' in picture 2-1, and inputting correct server password (default is 123456) to enter Restore Default page as picture 2-5:

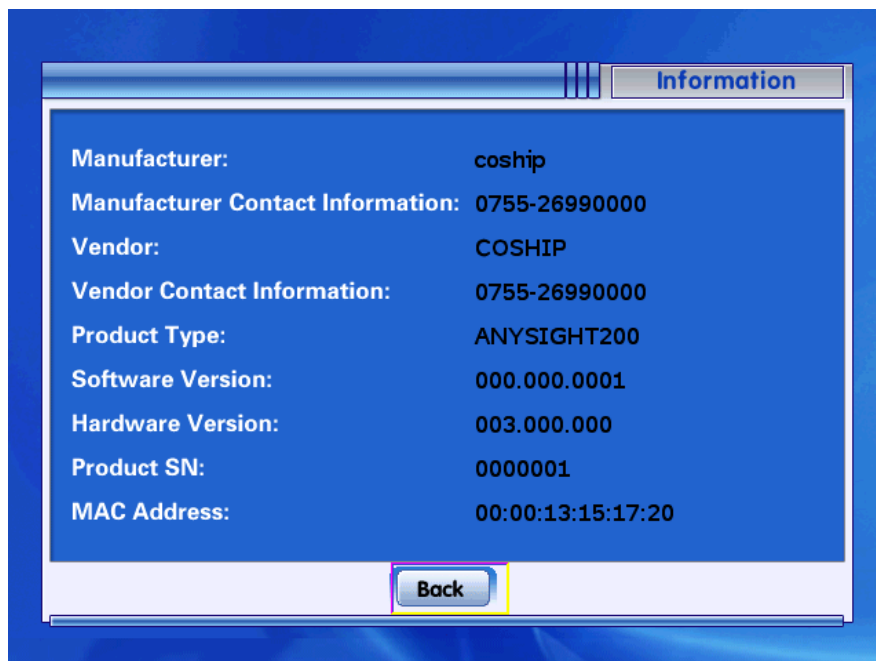


picture 2-5

Clicking 'OK', the default factory setting will be restored; clicking 'Cancel', the setting will be cancelled.

2.4 System Information

Choosing 'SysInfo' to enter the system information page as following picture 2-6:



picture 2-6

3 EPG

After network connects successfully, the STB will enter the EPG homepage automatically as picture 3-1:



picture 3-1

EPG homepage includes four modes: multicasting (Digital TV), VOD (Movie), music on demand and Internet surfing.

3.1 Multicasting (Digital TV)

Cilck ‘Digital TV’ in the EPG homepage, and enter multicast page. The first movie on the playlist will start automatically as pic3-2.



Picture3-2

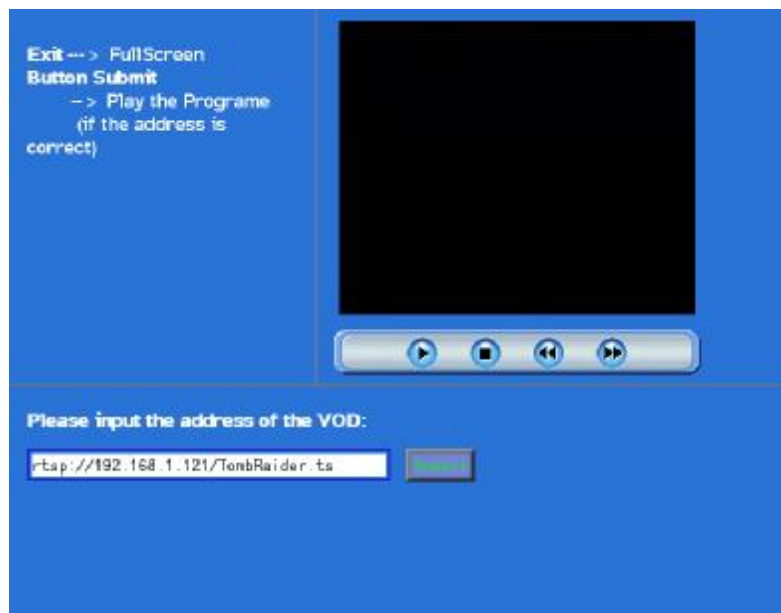
Subscribers could click the left program list to switch the program. If the subscribers want to enter the fullscreen mode, just press 'Exit' on the remote control as picture 3-3:



Picture3-3

3.2 VOD (Movie)

Clicking 'Movie' on the EPG homepage, then entering the VOD page as picture 3-4:

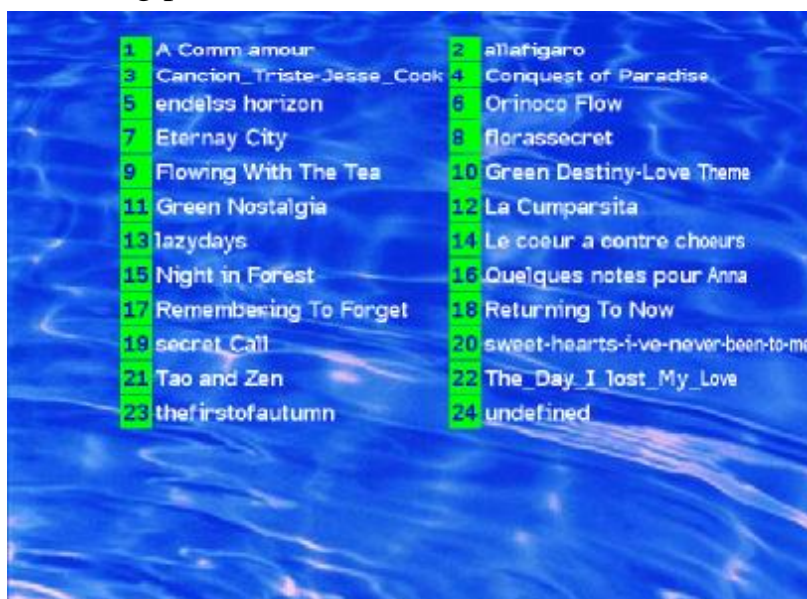


picture 3-4

Subscribers can input the address of the VOD program, then click ‘Submit’ to realise VOD broadcasting. Clicking the upper right area to play, pause, stop, fast-forward and fast-backward, same as in multicast mode, clicking ‘Exit’ to enter the full screen mode in this page.

3.3 Music on Demand

Clicking ‘Music’ in the EPG homepage to enter the music on demand page as the following picture 3-5:

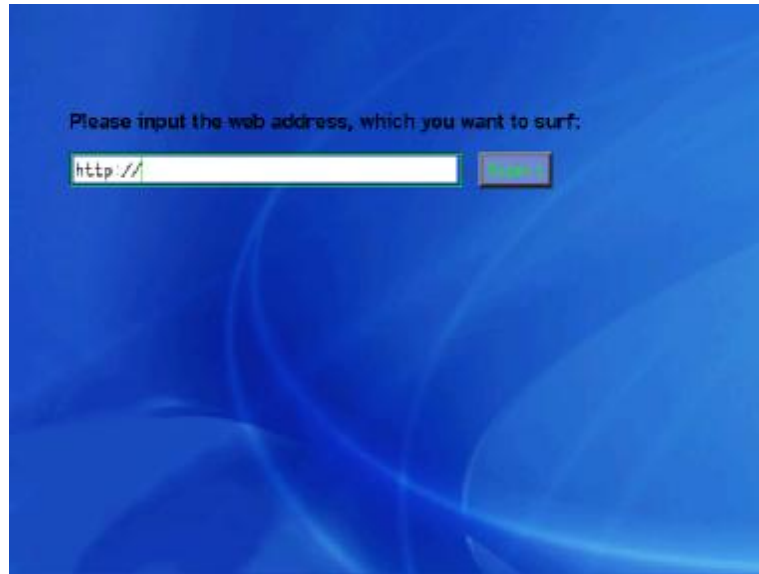


picture 3-5

Subscribers only need to click the music list to play the music.

3.4 Web Surfing

Click ‘Web Surfing’ in the EPG homepage to enter the web surfing page as picture 3-6:



picture 3-6

Inputting the url and clicking 'Submit' will start surfing the web.